

A CASE REPORT OF TUBEROUS SCLEROSIS WITH ATTENTION DEFICIT HYPERACTIVITY DISORDER IN A CHILD

Dr. Nisha Devi, Junior Resident in Department of Psychiatry, LGBRIMH, Tezpur, Assam, Mob No. 8768756863, email id- nishaaurva29@gmail.com

INTRODUCTION

- **DSM 5- Attention Deficit Hyperactivity Disorder (314.01)**
- **Prevalence- 1 in 6000 newborns, worldwide 1.5 million suffers.**

CASE DESCRIPTION

Child Mr. MIA, 4yrs 3month old child belong to Muslim Religion hailing from rural lower socio-economic background visited in Tertiary health care centre LGBRIMH a OPD visit with complaints seizure episodes for 2 months of age and restlessness, & hyperactivity since 8month. The illness was of acute onset, continuous course and deteriorating in progression. On physical examination, there were multiple hypomelanotic macules on trunk, in background of delayed in milestone of speech and walking with poor understanding ability. MRI brain showed multiple cortical tubers and subependymal nodulus's. MSE finding as child was restless, unable to follow instruction, move here and there in room, touching object kept in front of him. Psychomotor activity was increased, poor eye contact speech not elicited

DISCUSSION

The classic diagnostic triad for tuberous sclerosis complex consisting of mental retardation, epilepsy, and adenoma sebaceum.

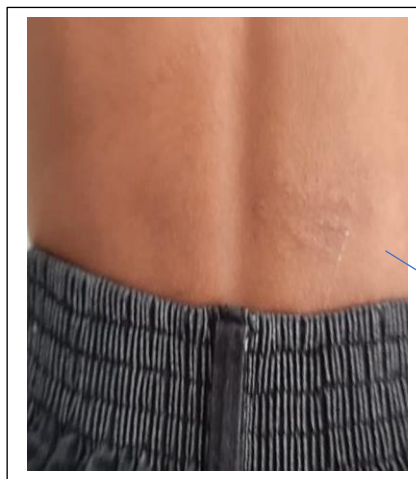
The primary treatment plan is to control seizure episodes by prescribing Tab. Carbamazepine 300mg. + for hyperactivity Tab. Clonidine 75mcg, Syp. Risperidone 0.5 mg after the 2 weeks of follow up showed improvements.

CONCLUSION

- Early diagnosis and management of psychiatric and behavioral issues of patients suffering from tuberous sclerosis is warranted
- Psycho education of the parents and caregivers about the disease and its multisystem implications is equally necessary.

REFERENCES

- Singh, I., Patkar, P., Chaudhury, S., Saldanha, D., & Diwan, C. Tuberous sclerosis with attention deficit hyperactivity disorder-A case report.



Shagreen Patch

Adenoma Sabeceum